

Bottom Bracket

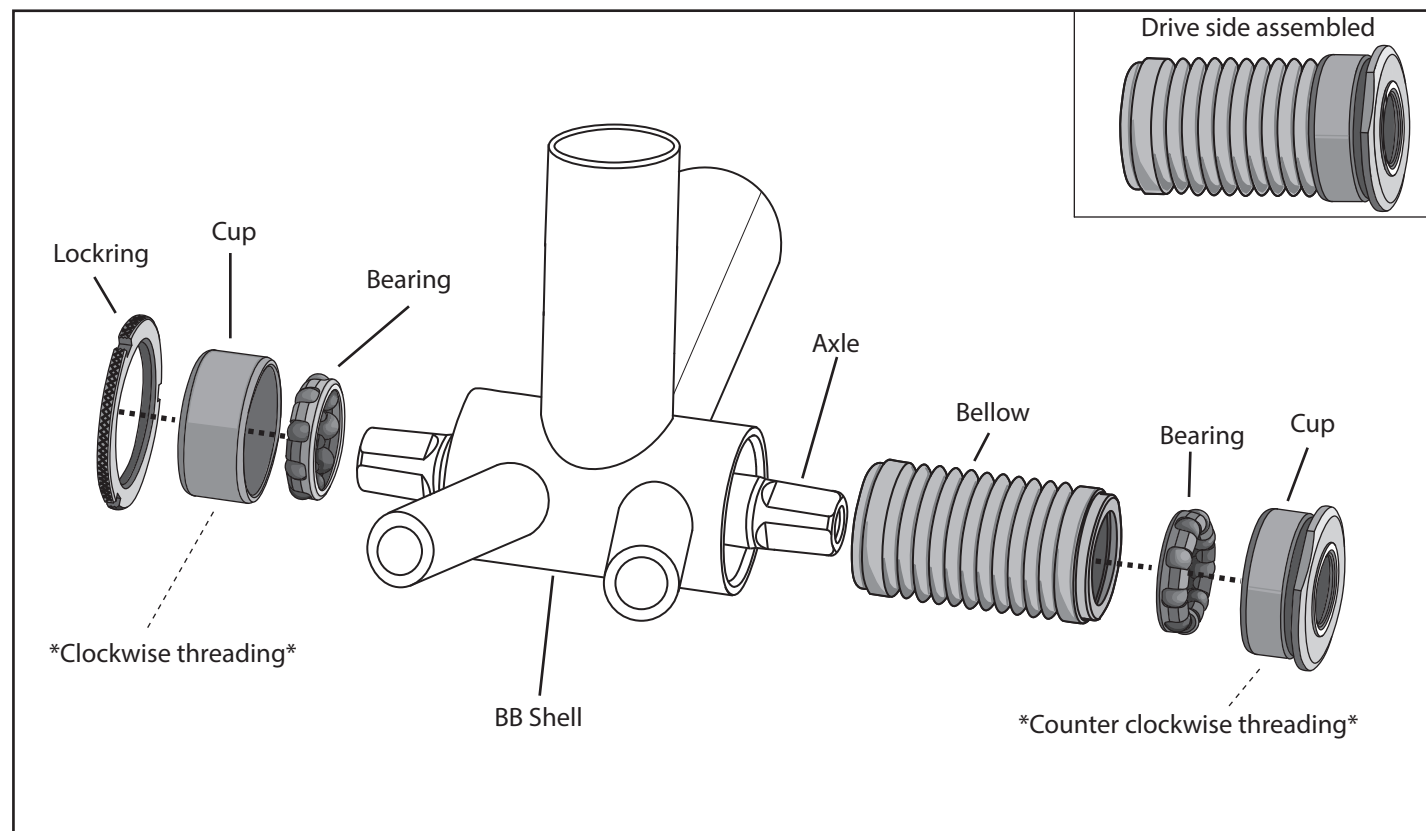
Instruction Manual

BB004

Please read all instructions before installing and using your new bottom bracket.

Warning

Failure to install bottom brackets properly may result in serious injury/death and or damage to your bicycle.



*****Fully grease both bearings with applicable grease (Not Included) before installing.*****

Installation

1. Insert bearing into drive side cup, taking note to face the bearing side away from the BB shell, as shown in illustration above.
2. Place drive side assembly into bb shell and torque to 35-44Nm
3. Insert axle (Not included)
4. Insert bearing into non-drive cup and insert over the axle into the BB shell, making sure ball side of bearing faces away from the BB as pictured.
5. Thread non-drive cup into the BB shell until tight.
6. Install lockring and torque to 35-44Nm.

SUNLITE