

Threaded HeadSet

Instruction Manual

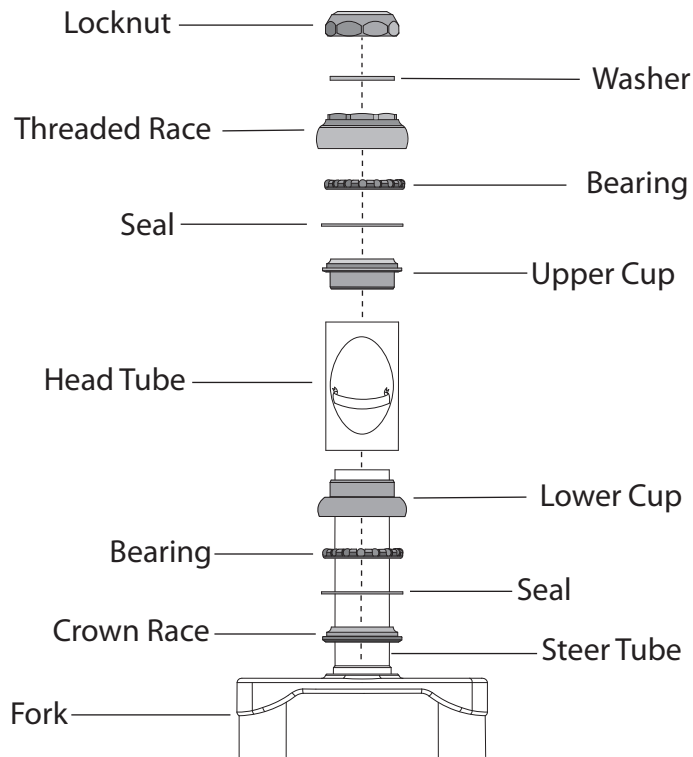
HS001

Please read all instructions before installing your new threaded headset.

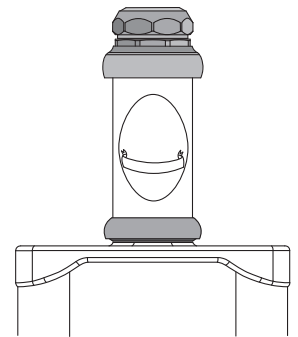
Note: Installation requires specialized equipment to press fittings onto the steer tube and into the head tube.

Warning

Failure to install headsets properly may result in damage to your bicycle, serious injury, and/or death.



Assembled View



Installation

1. Install crown race to fork using an appropriate press. Fitment should be flush and evenly seated.
2. Place seal and bearing over the steer tube taking note of the bearings orientation. Set aside.
3. Using a headset press install upper and lower cups to the head tube.
4. Insert fitted steer tube through the head tube, place the seal and bearing onto the steer tube as illustrated.
5. Install threaded race over the steer tube and thread until contact with the bearing. Ideally the fit should be as loose as possible without any play in the system. Do not over tighten.
6. Install washer and locknut, thread the locknut until tight or approximately 24Nm.
7. After installation of stem and handlebar, check for smooth operation without play. To adjust for play repeat steps 5 and 6. If play is still detected after adjusting the threaded race, check that all bearings, cups, and races are flush with their respected surfaces.
8. If steering is difficult loosen the threaded race a quarter turn and re-check.

SUNLITE